

NATIONAL REPORT

Submitted by Office of Disaster Preparedness and Emergency Management, Jamaica

BASIC INFORMATION

1. ICG/CARIBE EWS Tsunami National Contact (TNC)

The person designated by a Member State to an Intergovernmental Coordination Group (ICG) to represent his/her country in the coordination of international tsunami warning and mitigation activities. The person is part of the main stakeholders of the national tsunami warning and mitigation system. The person may be the Tsunami Warning Focal Point, from the national disaster management organization, from a technical or scientific institution, or from another agency with tsunami warning and mitigation responsibilities.

Name: **Alvin Gayle**

Title: **Commander**

Organization: **Office of Disaster Preparedness and Emergency Management**

Postal Address: **2-4 Haiing Road, Kingston 5**

E-mail Address: **directorgeneral@odpem.gov.jm**

Telephone Number: **876-906-9674-5**

Fax Number: **(876) 754-3229**

Cellular Telephone Number: **(876)754-9077**

Special Note: Mr Patrick Watson, Senior Director of Hazard Mitigation and Risk Management, Ministry of Local Government and Community Development is the assigned Officer. However, the ODPEM now reports to the Office of the Prime Minister. Hence the change noted.

2. ICG/CARIBE EWS Tsunami Warning Focal Point (TWFP)

The 7x24 contact person, or other official point of contact or address, is available at the national level for rapidly receiving and issuing tsunami event information (such as warnings). The Tsunami Warning Focal Point either is the emergency authority (civil defense or other designated agency responsible for public safety), or has the responsibility of notifying the emergency authority of the event characteristics (earthquake and/or tsunami), in accordance with national standard operating procedures. The Tsunami Warning Focal Point receives international tsunami warnings from the PTWC, or other regional warning centres.

Name: **Evan Thompson**

Title: **Director**

Responsible Organization: **Metrological Organisation of Jamaica**

Postal Address: **65 3/4 Half-Way-Tree Road, Kingston 10, Jamaica**

E-mail Address: **Evan.Thompson@megjc.gov.jm.**

Emergency Telephone Number: **1 876-929-3694**

Emergency Fax Number: **876-960-8989**

Emergency Cellular Telephone Number: **18765773611**

National Tsunami Warning Centre (if different from the above)

Person in Charge: **Alvin Gayle**

Title: **Commander**

Responsible Organization: **Office of Disaster Preparedness and Emergency Management**

Postal Address: **2-4 Haiing Road, Kingston 5**

E-mail Address: **directorgeneral@odpem.gov.jm**

Emergency Telephone Number: **876-906-9674-5**

Emergency Fax Number: **(876) 754-3229**

Emergency Cellular Telephone Number: **(876)754-9077**

3. Tsunami Advisor(s), if applicable

(Person, Committee or Agency managing Tsunami Mitigation in country)

Name: **Kevin Tankoo**

Title: **Head and Research Fellow Earthquake Unit**

Postal Address: **University of the West Indies, Mona, Kingston**

E-mail Address: **kevin.tankoo@uwimona.edu.jm**

Emergency Telephone Number:

Emergency Fax Number:

Emergency Cellular Telephone Number: **876-295-8373 (CUG)**

4. Tsunami Standard Operating Procedures for a Local Tsunami (when a local tsunami threat exists, less than 1 hour travel time)

SOP A <1hr lead time			
ACTIONS TO BE TAKEN	Lead Responsibility	Response Time (hr/min)	Support/ Alternate
Notification & Alert Procedures			
Issue Tsunami Warning Message	TWFP – DG ODPEM	<5min	MSJ, EQU, JCF
Notify critical agencies and communities at risk and special needs population	ODPEM, MLSS	5 – 10 mins	Parish Disaster Coordinators, JIS, first responders, RADA, JCPD, MDA communications arms, all media houses
Public address via Emergency Press Brief	Prime Minister OPM	5 – 10 mins	JIS, ODPEM, all media houses
Activate National Tsunami Response Plan	Director General ODPEM	<5min	Director MSJ
Broadcast Tsunami Warning Message via public media and post Tsunami Warning Message on websites and social media platforms	ODPEM/MSJ/EQU	<5min	JIS, OPM, MLGRD
Activation of NEOC depending on nature of threat	Director General ODPEM	5 – 10 mins	Prime Minister OPM
Emergency call out of NEOC staff	EOC Director ODPEM	5 – 10 mins	ODPEM staff
Broadcast names of designated Tsunami Shelters, evacuation routes and other relevant information	JIS, ODPEM, MCs	5 – 10 mins	All media houses
Trigger broadcast of National Alert Tone for tsunami threat with <3hrs lead time. Repeat every 30 minutes	ODPEM, JIS	<5min	All media houses
Provide the public with tsunami updates	ODPEM	<1hr	JIS, media houses
Activation of PEOC for parishes with threatened areas	Mayors	5 – 10 mins	Parish Disaster Coordinators
Activate EWS in threatened areas	CERT Teams, CDRM Groups	<5min	Parish Disaster Coordinator/ Committees
Emergency call out of National Volunteers	NDRMVP Coordinator	<1hr	Parish Disaster Coordinators, ODPEM
Evacuation of Threatened Areas			
Issue Evacuation Order for threatened areas	Director General ODPEM	<5min	Prime Minister OPM, MCs, MLGRD
Authorize movement of vessels to deep water where possible	PAJ	<5min	JCF Marine, JDFCG
Divert traffic away from threatened areas	JCF	<1hr	JDF
Coordinate evacuation of communities in	JCF, MCs, MLGRD	<1hr	JDF, JFB, Parish

Figure 1 – National tsunami response Plan and Standard Operating Procedure in Jamaica (page 43)

SOP A <1hr lead time			
ACTIONS TO BE TAKEN	Lead Responsibility	Response Time (hr/min)	Support/ Alternate
threatened areas			Disaster Coordinators, Volunteers, JUTC
Coordinate evacuation of emergency vehicles and equipment from threatened areas	JDF, JFB, MOHW, NEOC	<1hr	JCF, ODPEM, JDF
Coordinate evacuation and transfer of critical patients from hospitals in threatened areas	MOHW	<1hr	JDF, JCF, ODPEM
Restrict access into threatened areas	JCF, JFB	<1hr	JDF
Coordinate traffic and movement along evacuation routes	JCF	<1hr	JDF
Tsunami Shelter Management			
Mobilize Shelter Managers	Parish Disaster Coordinators	5 -10 mins	ODPEM
Activate Tsunami Shelters	Shelter Managers, Parish Disaster Coordinators	5 – 10 mins	ODPEM
Equip Tsunami Shelters with resources	Parish Disaster Coordinators	<1hr	MLSS, Jamaica Red Cross, ODPEM
Mobilize volunteers to support Shelter Managers	Parish Disaster Coordinators, NDRMVP Coordinator	<1hr	ODPEM, MLSS, Jamaica Red Cross
Pre-positioning of Resources			
Pre-position SAR equipment and personnel outside the threatened areas to respond post impact	JFB, JDFCG, NWA	<1hr	JDF, ODPEM
Activate Humanitarian Country Team	UNDP, MFAFT	<1hr	ODPEM
Pre-position staging for Mass Casualty outside the threatened areas to respond post impact	MOHW, JDF	<1hr	MLSS, Jamaica Red Cross, JCF
Pre-position emergency relief supplies and personnel outside of the threatened areas to respond post impact	MLSS	<1hr	ODPEM, Parish Disaster Coordinators, Jamaica Red Cross, JCF
Contact regional and international humanitarian partners to assist with emergency relief post impact	MFAFT	<1hr	MOFP, ODPEM, Customs, MLSS, Jamaica Red Cross
Border Security			
Discontinue all port activities in threatened areas	PAJ, AAJ	<1hr	JCF Marine, JDFCG
Evacuate air and sea-ports in threatened areas	PAJ, AAJ	<1hr	JFB, JCF, JDFCG
Restrict access to the ports by land and sea	JFB, JDFCG	<1hr	JDF, JCF

Figure 1 – National tsunami response Plan and Standard Operating Procedure in Jamaica (page 44)

SOP A <1hr lead time			
ACTIONS TO BE TAKEN	Lead Responsibility	Response Time (hr/min)	Support/ Alternate
Notify immigration officers	PICA	<1hr	AAJ, PAJ
Assist in evacuation of foreign nationals	PICA	<1hr	AAJ, PAJ, MFAFT

Figure 1 – National tsunami response Plan and Standard Operating Procedure in Jamaica (page 45)

5. Tsunami Standard Operating Procedures for a Regional Tsunami (when a regional tsunami threat exists, 1–3 hour travel time)

SOP B Up to 3hrs lead time			
ACTIONS TO BE TAKEN	Lead Responsibility	Response Time (hr/min)	Support/ Alternate
Notification & Alert Procedures – Pre-Impact Phase			
Issue Tsunami Warning Message	TWFP – DG ODPEM	<5min	MSJ, EQU, JCF
Notify critical agencies and communities at risk and special needs population	ODPEM, MLSS	5 – 10 mins	Parish Disaster Coordinators, JIS, first responders, RADA, JCPD, MDA communications arms, all media houses
Public address via Emergency Press Brief	Prime Minister OPM	5 – 10 mins	JIS, ODPEM, all media houses
Activate National Tsunami Response Plan	Director General ODPEM	<5min	Director MSJ
Broadcast Tsunami Warning Message via public media and post Tsunami Warning Message on websites and social media platforms	ODPEM/MSJ/EQU	<5min	JIS, OPM, MLGRD
Activation of NEOC depending on nature of threat	Director General ODPEM	5 – 10 mins	Prime Minister OPM
Emergency call out of NEOC staff	EOC Director ODPEM	5 – 10 mins	ODPEM staff
Broadcast names of designated Tsunami Shelters, evacuation routes and other relevant information	JIS, ODPEM, MCs	5 – 10 mins	All media houses
Trigger broadcast of National Alert Tone for tsunami threat with <3hrs lead time. Repeat every 30 minutes	ODPEM, JIS	<5min	All media houses
Provide the public with tsunami updates	ODPEM	<1hr	JIS, media houses
Activation of PEOC for parishes with threatened areas	Mayors	5 – 10 mins	Parish Disaster Coordinators
Activate EWS in threatened areas	CERT Teams, CDRM Groups	<5min	Parish Disaster Coordinator/ Committees
Emergency call out of National Volunteers	NDRMVP Coordinator	<1hr	Parish Disaster Coordinators, ODPEM
Evacuation of Threatened Areas			
Issue Evacuation Order for threatened areas	Director General ODPEM	<5min	Prime Minister OPM, MCs, MLGRD
Authorize movement of vessels to deep water where possible	PAJ	<5min	JCF Marine, JDFCG
Divert traffic away from threatened areas	JCF	<3hrs	JDF

Figure 1 – National tsunami response Plan and Standard Operating Procedure in Jamaica (page 46)

SOP B Up to 3hrs lead time			
ACTIONS TO BE TAKEN	Lead Responsibility	Response Time (hr/min)	Support/ Alternate
Coordinate evacuation of communities in threatened areas	JCF, MCs, MLGRD	<3hrs	JDF, JFB, Parish Disaster Coordinators, Volunteers, JUTC
Coordinate evacuation of emergency vehicles and equipment from threatened areas	JDF, JFB, MOHW, NEOC	<3hrs	JCF, ODPEM, JDF
Coordinate evacuation and transfer of critical patients from hospitals in threatened areas	MOHW	<3hrs	JDF, JCF, ODPEM
Restrict access into threatened areas	JCF, JFB	<3hrs	JDF
Coordinate traffic and movement along evacuation routes	JCF	<3hrs	JDF
Tsunami Shelter Management			
Mobilize Shelter Managers	Parish Disaster Coordinators	5 -10 mins	ODPEM
Activate Tsunami Shelters	Shelter Managers, Parish Disaster Coordinators	5 – 10 mins	ODPEM
Equip Tsunami Shelters with resources	Parish Disaster Coordinators	<1hr	MLSS, Jamaica Red Cross, ODPEM
Mobilize volunteers to support Shelter Managers	Parish Disaster Coordinator, NDRMVP Coordinator	<2hrs	ODPEM, MLSS, Jamaica Red Cross
Pre-positioning of Resources			
Pre-position SAR equipment and personnel outside the threatened areas to respond post impact	JFB, JDFCG, NWA	<3hrs	JDF, ODPEM
Activate Humanitarian Country Team	UNDP, MFAFT	<1hr	ODPEM
Pre-position staging for Mass Casualty outside the threatened areas to respond post impact	MOHW, JDF	<3hrs	MLSS, Jamaica Red Cross, JCF
Pre-position emergency relief supplies and personnel outside of the threatened areas to respond post impact	MLSS	<2hrs	ODPEM, Parish Disaster Coordinators, Jamaica Red Cross
Contact regional and international humanitarian partners to assist with emergency relief post impact	MFAFT	<1hr	MOFP, ODPEM, Customs, MLSS, Jamaica Red Cross
Border Security			
Discontinue all port activities in threatened areas	PAJ, AAJ	<1hr	JCF Marine, JDFCG
Evacuate air and sea-ports in threatened areas	PAJ, AAJ	<3hrs	JFB, JCF, JDFCG
Restrict access to the ports by land and sea	JFB, JDFCG	<3hrs	JDF, JCF

Figure 1 – National tsunami response Plan and Standard Operating Procedure in Jamaica (page 47)

SOP B Up to 3hrs lead time			
ACTIONS TO BE TAKEN	Lead Responsibility	Response Time (hr/min)	Support/ Alternate
Notify immigration officers	PICA	<1hr	AAJ, PAJ
Assist in evacuation of foreign nationals	PICA	<3hrs	AAJ, PAJ, MFAFT

Figure 1 – National tsunami response Plan and Standard Operating Procedure in Jamaica (page 48)

6. Tsunami Standard Operating Procedures for a Distant Tsunami (when a distant tsunami threat exists, more than 3-hour travel time)

SOP C 3 - 6hrs lead time			
ACTIONS TO BE TAKEN	Lead Responsibility	Response Time (hr/min)	Support/ Alternate
Notification & Alert Procedures – Pre-Impact Phase			
Issue Tsunami Watch and continue to monitor	TWFP – ODPEM	<5min	MSJ, EQU, JCF
Issue Tsunami Warning Message	TWFP – ODPEM	<3hrs	MSJ, EQU, JCF
Notify critical agencies and communities at risk and special needs population	ODPEM	<1hr	Parish Disaster Coordinators, JIS, RADA
Public address via Emergency Press Brief	Prime Minister OPM	<3hrs	JIS, ODPEM
Activate National Tsunami Response Plan	Director General ODPEM	<3hrs	Director MSJ, OPM
Post Tsunami Watch Message on website	ODPEM/MSJ/EQU	<1hr	JIS
Post Tsunami Warning Message on website	ODPEM/MSJ/EQU	<3hrs	JIS
Activation of NEOC depending on nature of threat	Director General ODPEM	<3hrs	Prime Minister OPM
Emergency call out of NEOC staff	EOC Director ODPEM	<3hrs	ODPEM staff
Broadcast Tsunami Warning Message via public and social media	JIS	<3hrs	MSJ, EQU-CARIMAC, all media houses
Broadcast names of designated Tsunami Shelters and evacuation routes on public and social media	JIS	<3hrs	ODPEM, all media houses
Trigger broadcast of National Alert Tone for tsunami threat with <3hrs lead time. Repeat every hour	ODPEM	<3hrs	JIS, all media houses
Broadcast Tsunami Warning Message on social media platforms	ODPEM, MSJ	<3hrs	JCF, MOHW, MLSS
Provide the public with tsunami updates	ODPEM	<6hrs	JIS
Activation of PEOC for parishes with threatened areas	Mayors	<3hrs	Parish Disaster Coordinators
Emergency Call out of PEOC staff	Parish Disaster Coordinators	<3hrs	Chairman of Parish Disaster Committee
Activate EWS in threatened areas	CERT Teams, CDRM Groups	<3hrs	Parish Disaster Coordinator
Emergency call out of National Volunteers	NDRMVP Coordinator	<3hrs	Parish Disaster Coordinators, ODPEM
Evacuation of Threatened Areas			
Authorize movement of vessels to deep water where possible	PAJ	<3hrs	JCF Marine, JDFCG
Broadcast names of evacuation routes on public media	JIS	<1hr	ODPEM
Post names of evacuation routes on website and social media	ODPEM	<1hr	JIS, NWA, EQU, MLGRD
Divert traffic away from threatened areas	JCF	<6hrs	JDF

Figure 1 – National tsunami response Plan and Standard Operating Procedure in Jamaica (page 49)

SOP C 3 - 6hrs lead time			
ACTIONS TO BE TAKEN	Lead Responsibility	Response Time (hr/min)	Support/ Alternate
Coordinate evacuation of communities in threatened areas	JCF	<6hrs	JDF, JFB, Parish Disaster Coordinators, Volunteers
Coordinate evacuation of emergency vehicles and equipment from threatened areas	JDF, JFB, MOHW	<4hrs	JCF, ODPEM
Coordinate evacuation and transfer of critical patients from hospitals in threatened areas	MOHW	<4hrs	JDF, JCF, ODPEM
Restrict access into threatened areas	JCF	<6hrs	JDF
Coordinate traffic and movement along evacuation routes	JCF	<4hrs	JDF
Tsunami Shelter Management			
Mobilize Shelter Managers	Parish Disaster Coordinators	<3hrs	ODPEM
Activate Tsunami Shelters	Shelter Managers	<3hrs	Parish Disaster Coordinators
Equip Tsunami Shelters with resources	Parish Disaster Coordinators	<3hrs	MLSS, Jamaica Red Cross
Mobilize volunteers to support Shelter Managers	NDRMVP Coordinator	<3hrs	ODPEM, MLSS, Jamaica Red Cross
Pre-positioning of Resources			
Pre-position SAR equipment and personnel outside the threatened areas to respond post impact	JFB, JDFCG, NWA	<3hrs	JDF, ODPEM, NDRMVP Coordinator
Activate Humanitarian Country Team	UNDP, MFAFT	<4hrs	ODPEM
Pre-position staging for Mass Casualty outside the threatened areas to respond post impact	MOHW	<3hrs	MLSS, Jamaica Red Cross
Pre-position emergency relief supplies and personnel outside of the threatened areas to respond post impact	MLSS	<3hrs	ODPEM, Parish Disaster Coordinators, Jamaica Red Cross
Contact regional and international humanitarian partners to assist with emergency relief post impact	MFAFT	<1hr	MOFP, ODPEM, Customs, MLSS, Jamaica Red Cross
Border Security			
Discontinue all port activities in threatened areas	PAJ, AAJ	<3hrs	JCF marine, JDFCG
Evacuate air and sea ports in threatened areas	PAJ, AAJ	<3hrs	JFB, JCF, JDFCG
Restrict access to the ports by land and sea	JFB, JDFCG	<6hrs	JDF, JCF
Notify immigration officers	PICA	<3hrs	AAJ, PAJ
Assist in evacuation of foreign nationals	PICA	<3hrs	AAJ, PAJ, MFAFT

Figure 1 – National tsunami response Plan and Standard Operating Procedure in Jamaica (page 50)

For each situation, please provide the following:

- *What organization identifies and characterizes tsunamigenic events?*

The organisation which identifies and characterizes tsunamigenic events is the Pacific Tsunami Warning Centre.

- *What is the threshold or criteria for declaring a potential tsunami emergency?*

The threshold or criteria for declaring a potential tsunami emergency is magnitude 6 and greater.

- *What organization acts on the information provided by the agency responsible for characterizing the potential tsunami threat?*

The ODPEM functions as the National Tsunami Warning Centre. National coordination is carried out by the ODPEM through the activation of the National Emergency Response Centre (NEOC). There are fourteen (14) Parish Disaster Coordinators who are responsible for the activation and coordination of Parish Emergency Operations Centres (PEOC) in each parish. Activation of the PEOC would be triggered in all threatened/affected parishes. The national response mechanism is tiered with response being triggered at national, parish and community level. A tsunami impact with wave heights in excess of 1 meter and a response time equal or less than three (3) hours will trigger national response and activation of this plan.

4.3 Initial Response - IMPACT PHASE

The Impact Phase is classified as the point where the tsunami impacts the coast and can last for hours. NO rescue mission is to be authorized in any threatened area during a tsunami impact. All other actions are to be carried out post impact. Table 5 outlines actions to be taken during the impact phase.

Table 5: Critical actions during tsunami impact

Critical Actions during Tsunami Impact	Lead Responsibility
1. Satellite and aerial monitoring and survey of impact areas	NEOC/JIOC
2. Continued warning and evacuation of threatened areas	NEOC/PEOC
3. Restrict access to threatened and impacted areas	JCF/JDF
4. Management of activated Tsunami Evacuation Shelters and support to evacuees	PEOC/Shelter Managers/MLSS/Jamaica Red Cross
5. Pre-position Emergency Response Teams (SAR, Mass Casualty, Debris Management) and equipment outside the threatened areas	NEOC/PEOC
6. Continued updates and engagement of public and social media	NEOC

Figure 1 – National tsunami response Plan and Standard Operating Procedure in Jamaica (page 31)

• How is the tsunami information (warning, public safety action, etc) disseminated within country? Who is it disseminated to?

The TWEFP which is the Met Office operates on a 24 hour basis. When the message is received, it is transmitted to the ODPEM, National Tsunami Warning Centre as per communication protocol in Figure 6 below.

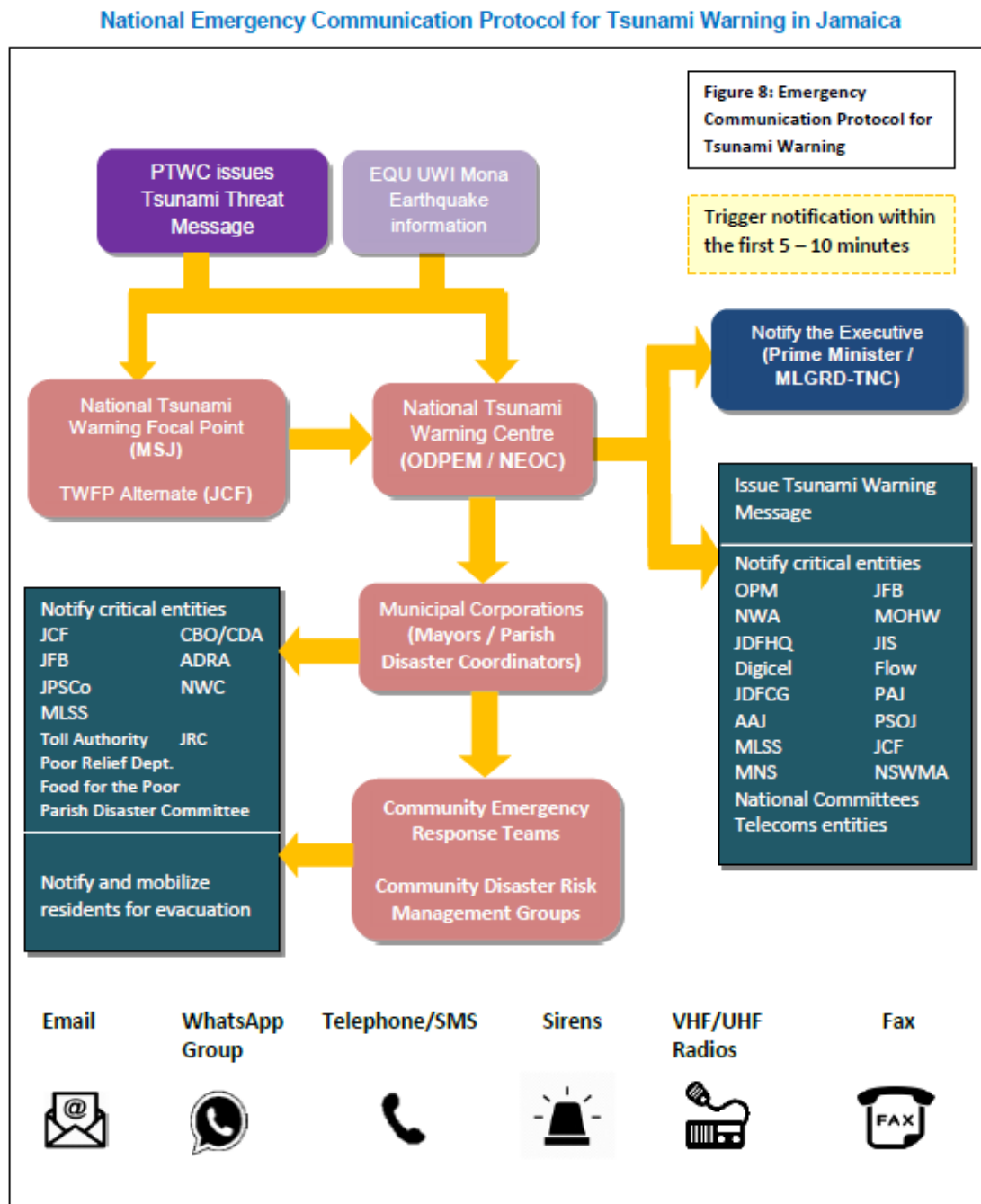


Figure 1 – National tsunami response Plan and Standard Operating Procedure in Jamaica (page 27)

- *How is the emergency situation terminated?*

The Director General ODPEM as National Coordinator is responsible for deactivating the NEOC and standing down emergency response operations following the impact of a tsunami. Given the scale of the disaster, standing down procedures may not be executed weeks or months post impact. Critical sectors and response agencies will continue to carry out early recovery actions in the affected areas after the standing down of emergency operations.

- *For Distant Tsunami Procedures:*

What actions were taken in response to warnings issued by PTWC and/or US NTWC, during the intersessional period?

The actions were taken in response to warnings issued by PTWC and/or US NTWC, during the intersessional period are as follow:

1. A report was generated from the magnitude 7.6, SW of the Cayman Islands on February 8, 2025. The report was submitted to UNESCO/IOC.
2. The creation of the Alligator Pond Tsunami Plan 2024 (draft)
3. Treasure Beach Tsunami Plan Tsunami Plan 2026 (draft)
4. Participation in the Carib Wave 2026 Tsunami Simulation in the Parish of St Mary
5. Tsunami Community Selection Criteria March 2026

National Tsunami Notification and Alert Procedures for Jamaica

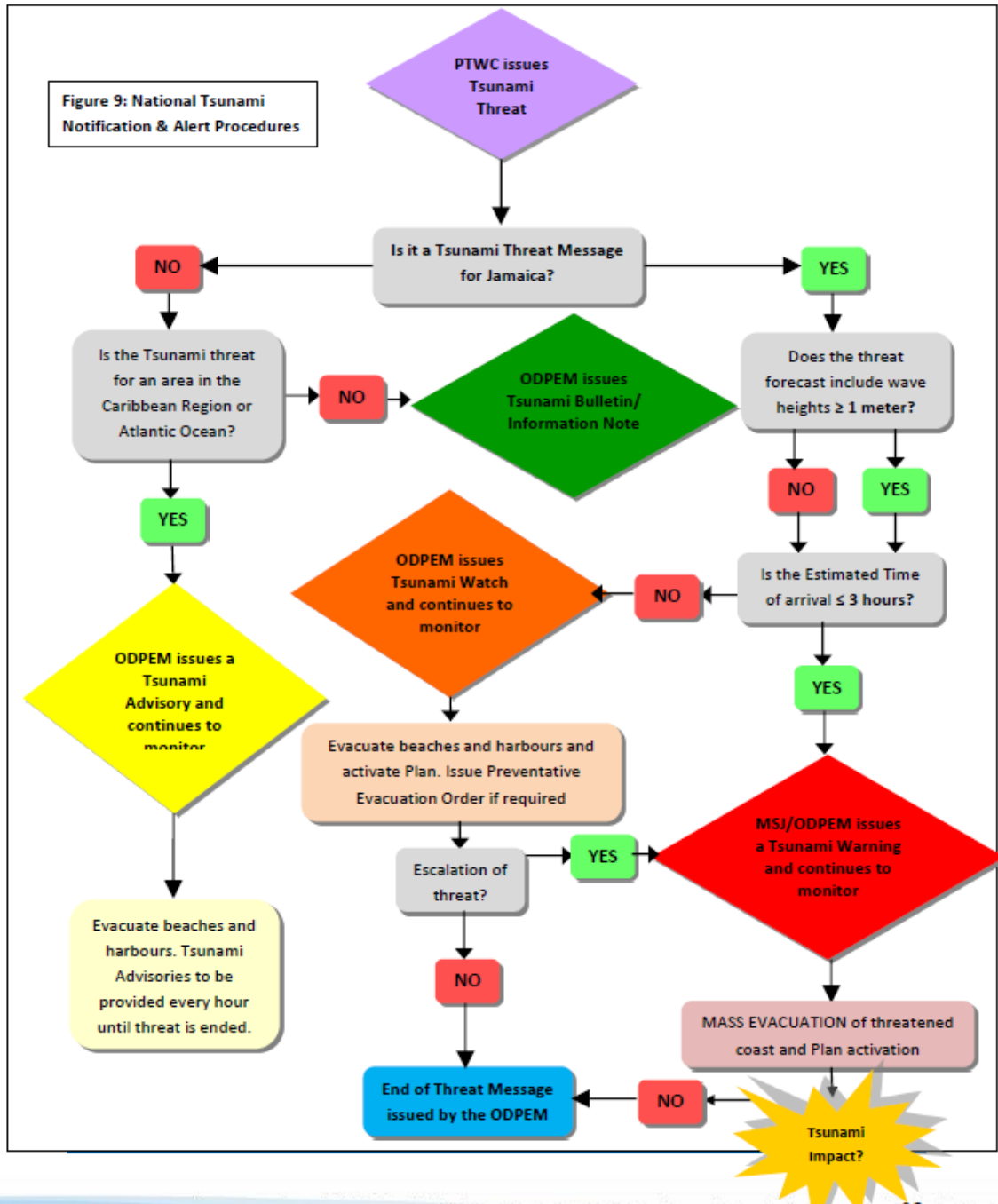


Figure 1 – National tsunami response Plan and Standard Operating Procedure in Jamaica (page 28)

SOP D Tsunami Impact			
ACTIONS TO BE TAKEN	Lead Responsibility	Response Time (hr/min)	Support/ Alternate
Satellite and aerial monitoring and survey of impact areas	JDF, ODPEM	<1hr	NWA, JDFCG, NERGIST
Continued warning and evacuation of threatened areas	ODPEM	Onset until all clear	Parish Disaster Coordinators, JIS, JFB, JDF, JCF, RADA
Restrict access to threatened and impacted areas	JCF	Onset until all clear	JDF, JDFCG, Municipal Police
Management of activated Tsunami Evacuation Shelters and support to evacuees	Parish Disaster Coordinators, Shelter Managers	Onset until all clear	Jamaica Red Cross, MLSS, Volunteers
Emergency Response Teams (SAR, Mass Casualty, Debris Management) and equipment to remain on standby outside the threatened areas	JFB, JDFCG, MOHW, NSWMA, NWA	Standby	JCF, JDF, MLSS, Jamaica Red Cross, National Volunteers
Continued tsunami updates and engagement of public and social media	ODPEM	Ongoing	JIS, Parish Disaster Coordinators, JCF, MSJ, EQU
Assist in evacuation of foreign nationals	PICA	All Clear	AAJ, PAJ, MFAFT
Re-entry of residents	PICA	All Clear	AAJ, PAJ, MFAFT
Investigation surveillance of port facilities	PICA	All Clear	PENDING

Figure 1 – National tsunami response Plan and Standard Operating Procedure in Jamaica (pg)

8. Information on Tsunami occurrences/Tsunami Exercises

Please include sea level observations, pictures, wave arrival descriptions, public, media, or other responses to warnings, lessons learned, etc.

The February 8, 2025, M 7.6 earthquake which occurred southwest of the Cayman Islands occurred because of a strike slip fault in the shallow crust near the boundary between the North America and Caribbean Plates.

Large earthquakes at this location of the plate boundary are not unexpected. A total of 10 M6 or greater earthquakes have occurred with 250 km of the February 8, 2025 Earthquake. Notably on January 10, 2018 a M7.5 earthquake occurred nearby with a similar mechanism. The 2018 earthquake caused damage and a small tsunami. The remote location of these earthquakes limits the potential for significant damage due to shaking (USGS. 2025).

The Pacific Tsunami Warning Centre issued the first threat message received by the ODPEM, National Tsunami Warning Centre at 18:31 hrs (6:31 p.m.). This was followed by three additional threat messages and a final message which was issued at 21:06 hrs (9:06 p.m.).

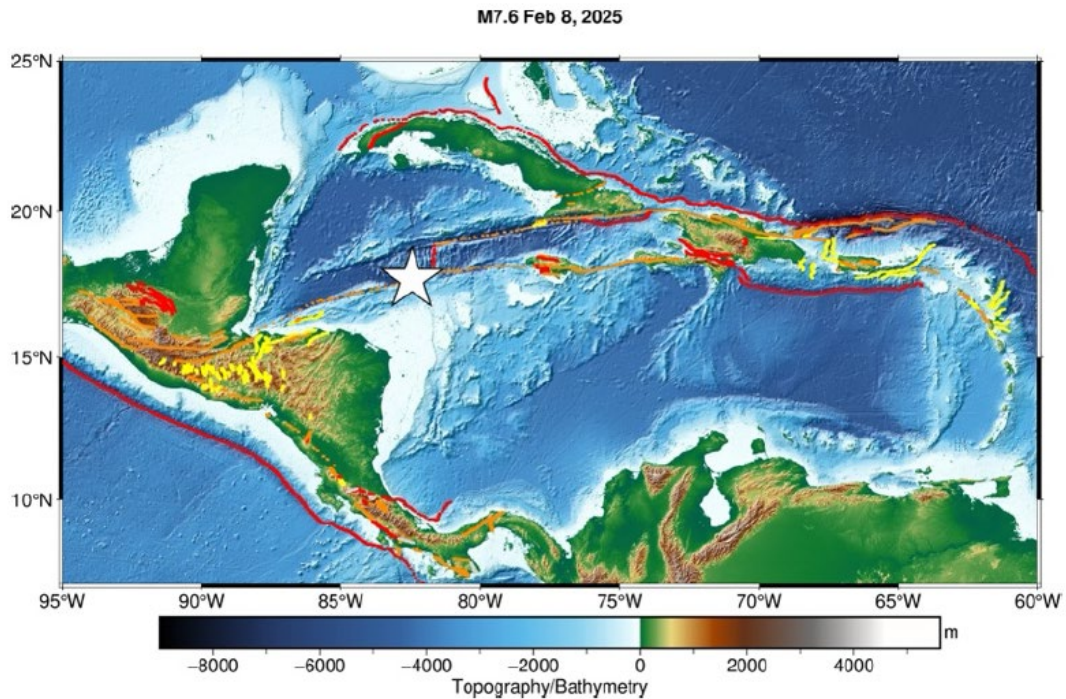


Figure 1. Map of Cayman Earthquake – UNESCO Report 2025.

PTWC Duty Scientists determine the preliminary earthquake location, depth and magnitude

- Origin Time 23:23:15
- Location: 17.8 N 82.5W
- Depth: 33 km
- Magnitude: Mw=8.0

TIMELINE AND SEQUENCE OF EVENTS

DATE	TIME	DETAILS
February 8, 2025	6: 31 p.m.	PTWS issued the first threat message
	7: 14 p.m.	Notification from KFTL
	7: 21 p.m.	CDEMA notified the DDG
	7: 25 p.m.	Tsunami Message # 2 issued to the Parish What's App Group
	7: 40 p.m.	Tsunami Message # 1 issued to the Parish What's App Group
	7: 40 p.m.	Tsunami Message #3 issued to Parish what's App group.

	9:19 p.m.	Tsunami Threat Message # 5 issued to the parish What's App group
	7: 43 p.m.	DDG responded with a call Re monitoring via Coast Goard
	7: 46 p.m.	Notification to Coast Guard Control Room
	7: 53 p.m.	Met Office Duty Forecaster contacted NTWC which was confirmed that there was an advisory
	7: 59 p.m.	DDG contacted the Board Chairman
	8: 21 p.m.	NTWC was in contact with CDEMA

ACTIONS TAKEN - EMERGENCY NOTIFICATION

The Meteorological Service (Tsunami Warning Focal Point) communicated with the Deputy Director General.

ODPEM in its capacity as the National Tsunami Warning Centre carried out the following actions:

1. Notification to Jamaica Constabulary Force (alternative TWFP) to alert police stations in coastal areas to monitor shoreline.
2. Notification to the Parish Disaster Coordinators through their What's app group and by telephone calls (those located on the southern, southwest and western parishes)
3. Notification of the National Emergency Operations Centre What's App group
4. Special Posting in the St. James EOC What's Group based on the epicentre of the earthquake
5. Port Authority was also notified to conduct monitoring of the harbours through the Harbour Master and Port Facility Security Officers
6. Notification to the Ministry of Local Government and Community Development - Tsunami National Contact by way of the NEOC What's App group.
7. Notification to the Board of Management (Chairman)
8. A News Release was issued at 10:00 p.m.

MITIGATION MEASURES

Coastal surveillance was implemented by the Jamaica Constabulary Force (JCF) and the Port Authority of Jamaica. This would monitor increased wave activity and provide early warning if necessary.

Duty Scientists reviewed the RIFT tsunami forecast based on PTWC's preliminary earthquake Parameters and an assumed earthquake mechanism based on the local tectonics. They reviewed the preliminary USGC CMT showing an MW of 7.6. This additional preliminary information indicated a less broad tsunami threat. PTWC's preliminary magnitude of 8.0 would have warranted a warning for Puerto Rico and the Virgin Islands but the decision was made to use a lower magnitude based on the USGS CMT and only issue an Advisory. A Tsunami Watch was

not considered since the time left to the first wave arrived in Puerto Rico was less than 3 hours, the minimum for a Watch

9. Web sites (URLs) of national tsunami-related web sites

- a) <https://metservice.gov.jm/>
- b) <https://www.odpem.org.jm/>

10. Summary plans of future tsunami warning and mitigation system improvements.

This information will be used to aid the development of the CARIBE-EWS Implementation Plan

1. The National Land Agency (NLA) to assist in providing data geared towards the creation of tsunami-related maps for vulnerable communities across the island to aid in the creation
2. Greater investment in tsunami signage at UNESCO/IOC standards and increasing the number of tsunami-related signs across the island.
3. Development, formalization, and investment in alert/warning systems with a focus on the implementation of multi-hazard sirens in Montego Bay and Kingston
4. Review the existing SOPs for tsunami preparedness and response.
5. Development of more community-based tsunami response plans (coastal communities)
6. Building capacity of Geographical Information Systems to improve on hazard mapping and hazard modelling
7. Increase Tsunami Public Awareness and Education activities
8. Formalize a Common Alerting Protocol (CAP) System

11. EXECUTIVE SUMMARY

Between 2021 and 2022, the Office of Disaster Preparedness and Emergency Management (ODPEM) worked with UNESCO's Intergovernmental Coordination Group to develop the Tsunami Readiness Pilot Program for Old Harbour Bay, St. Catherine. Validating evacuation maps, conducting national consultations, holding National Tsunami Recognition Board meetings, placing tsunami signage, and submitting recognition reports were among the activities. Old Harbour Bay was officially designated as "tsunami ready." On November 5, 2021, World Tsunami Day included siren testing, the distribution of promotional materials, the installation of evacuation route signage, the development of tsunami response plans, and earthquake and tsunami drills. Key goods were infomercials and educational fliers designed to improve community preparation.

In 2023, the IOC-UNESCO, in partnership with NORAD and CTIC, launched the Tsunami Ready Programme in Port Maria, St Mary. So far, activities have included a community meeting, a transect walk, a Tsunami Ready event on World Tsunami Day, and a multi-stakeholder planning workshop. Mrs. Yasheka Jathan Thompson took part in tsunami hazard mapping training in August 2022. The initiative is financed by UNESCO/IOC and CTIC, and will involve a local consultant in developing a final plan. Additional steps are planned for 2023, including the acquisition of Low Technology products and an accreditation process.

In 2023, the Preparedness and Emergency Operations Division, in partnership with the Manchester Municipal Corporation, initiated a Tsunami Emergency Response Plan for Alligator Pond. A community meeting on June 14, 2023, was held to educate residents about tsunamis, leading to the engagement of a local consultant who collaborated with the Parish Disaster Coordinator on the plan, which was validated on March 28, 2024. The United Nations has designated November 5 as World Tsunami Awareness Day (WTAD) to enhance tsunami awareness and promote disaster risk reduction, with the theme “Fighting inequality for a resilient future.” This theme highlights how tsunamis can exacerbate poverty and inequality in coastal communities, emphasizing the importance of awareness and cooperation for resilience. Official correspondence from the Inter Oceanographic Commission on WTAD was referenced.

On March 22, 2024, a National Communication Exercise commemorating Carib Wave 2024 was conducted by ODPEM, which involved making calls to MDAs, sending emails with messages from the Pacific Tsunami Warning Centre, and testing satellite phones as part of the CDEMA Response Mechanism. A live exercise involving an Earthquake, Fire, and Tsunami Drill was executed successfully in collaboration with St. Catherine MC and Jamaica Energy Partners (Dr. Bird Power Plant). Additionally, ODPEM completed an online survey from UNESCO/IOC regarding participation.

12. NARRATIVE

Detailed description of innovations or modifications to National tsunami warnings procedures or operations since last National Report, tsunami research projects, tsunami mitigation activities and best practices (especially in preparedness and emergency management), tsunami exercises, as well as public education programmes or other measures taken to heighten awareness of the tsunami hazard and risk.

2021- 2022

The Office of Disaster Preparedness and Emergency Management (ODPEM) engaged in the Tsunami Readiness Pilot Recognition Technical Cooperation for the **fishing village of Old Harbour Bay** in St. Catherine through the Intergovernmental Coordination Group (ICG) a subsidiary body of the Intergovernmental Oceanic Commission (IOC) of the United Nations Education, Scientific and Cultural Organisation (UNESCO/ IOC/ICG/ CTIC). Some activities carried out order to meet guidelines/ criteria included the validation of Evacuation Map; National and Parish Consultations Re National Tsunami Plan and SOPs; meetings of the National Tsunami Recognition Board, installation of Tsunami Signage; submission of the report on final products of the recognition deliverables and the production of an infomercial.

The final adjudication documents were submitted in order for Old Harbour Bay to be recognised as being “Tsunami Ready”. World Tsunami Day was observed on November 5, 2021 with the following activities:

1. Testing of Siren, Old Harbour Bay, St. Catherine
2. Circulation of Director General’s Message and circulation of Tsunami Promotional Video
3. Erection of Evacuation Route sign, Farquhar Beach, Milk River Clarendon and unveiling of Tsunami Public Education sign as well as the donation of two (2) Megaphones to the community and the dissemination of flyers at Farquhar Beach, Milk River, Clarendon.
4. Drafting of the Tsunami Response Plan for Farquhar Beach, Milk River, Clarendon.
5. Handing over of the draft Old Harbour Bay Response Plan to the Old Harbour Bay CDA while disseminating posters developed under the Tsunami Recognition Programme.
6. Informational Products produced by the Portmore City Municipality and the St. Elizabeth Municipal Corporation.
7. Earthquake and Tsunami Table-top Exercise, Ocho Rios (TPDICO/ Tourism Stakeholders Initiative) February 2022

2023

The Intergovernmental Oceanographic Commission of United Nations Educational Scientific and Cultural Organisation (IOC-UNESCO) under a joint arrangement by the Norwegian Agency for Development Cooperation (NORAD) and the Caribbean Tsunami Information Centre (CTIC) has embarked on a Tsunami Ready Programme for the community of Port Maria in St Mary. One (1) Community meeting held, one transect walk across Port Maria, one Tsunami Ready activity held on World Tsunami Day and one (1) multi stakeholder planning session conducted. Mrs. Yasheka Jathan Thompson of the St. Catherine Municipal Corporation also participated in a Tsunami Hazard Mapping Training in August 2022 under the NORAD Project. The project is being funded by UNESCO/ IOC and the Caribbean Tsunami Information Centre (CTIC). A local consultant was engaged and a finalised plan has been developed. The acquisition of Low Technology products are to be finalised as well as the accreditation process in 2023.

2024

National Tsunami Sub-Programme

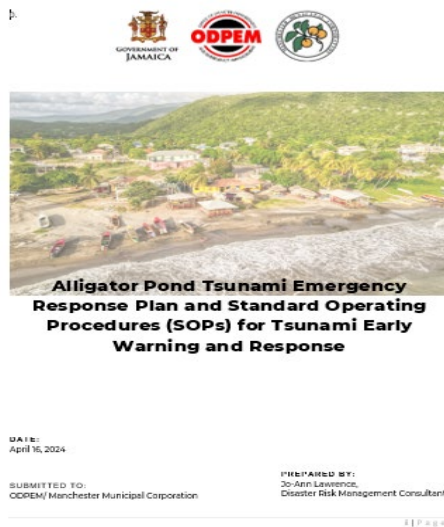


Figure 7: Alligator Pond Tsunami Response

Community-Based Tsunami Ready Initiative for Alligator Pond, Manchester

The Preparedness and Emergency Operations Division in partnership with the Manchester Municipal Corporation embarked on the development of a Tsunami Emergency Response Plan for Alligator Pond in Manchester. One (1) Community meeting organised by the Social Development Commission was held on June 14, 2023 to sensitize residents to tsunamis and from the intervention a local consultant was engaged to work with the Parish Disaster Coordinator for Manchester to develop the plan. A draft plan was developed and after a series of consultations the plan was validated on March 28, 2024. The Custos Rotulorum was in attendance.

The United Nations has designated **Sunday, November 05** as World Tsunami Awareness Day (WTAD) to raise tsunami awareness and share innovative approaches to disaster risk reduction while raising awareness about reducing tsunami-related risks. Rising sea levels caused by climate related hazards will further increase the risk associated with tsunamis.

WTAD was observed under the theme, “**Fighting inequality for a resilient future**”, will examine ways in which tsunamis can drive vulnerable populations further into poverty and exacerbate inequality. Communities located in coastal areas will be more exposed to risk drivers – poverty, inequality and vulnerability – poverty levels, exposure and discrimination, all play a role in determining who is likely to be affected and how. Enhancing awareness and cooperation will ensure that communities will be prepared and resilient. We refer to the official correspondence from the Inter Oceanographic Commission (IOC) on the observance of World Tsunami Day.

Table 2 outlines the activities per parish:

Municipal Corporation	Activity	Date
Kingston and St. Andrew	Talk to Schools- special schools on the coast that are targeted	November 17
St. Thomas	Sensitization at Morant Bay Fishing Village	November 8
St. Catherine	Siren Testing – Old Harbour Bay Tsunami Exhibition – Old Harbour High School	November 8
Portmore	Out A Road Crew Vox Pop and Information Blitz, Hellshire Beach and Port Henderson	November 17

Municipal Corporation	Activity	Date
Portland	Quiz Competition for Primary Schools	November 21, 22, 27, 29
St. Mary	Testing of Siren, St. Mary MC, Port Maria –JICA project Tsunami Sensitization – Port Maria Primary	November 10
St. Ann	First Aid Training, Ocho Rios	November 16
Clarendon	Target: Portland Cottage Presentation at Portland Cottage Beach Community Based Tsunami Drill	November 6
Manchester	Multi-Agency Tsunami Planning Exercise for the development of the Alligator Pond Tsunami Response Plan	October 27
St. Elizabeth	Multi-Agency Planning Session to develop the Parish Tsunami Response Plan Information Sensitization sessions in Treasure Beach and Earthquake and Tsunami Sensitization in Nain	November 30
Hanover	Series of Earthquake and Tsunami Sensitization (entire month) Earthquake/Fire Drill and Tsunami Presentation at Ruseas High School in Lucea Schools and Hotels along the coast targeted from Round Hill to Green Island to Negril (Hanover border)	November 8
Westmoreland	Tsunami Presentations to schools Negril Primary School New Hope Primary School (Whitehouse) Mearnsville Primary (Bluefields)	November 6 November 8 November 10
Trelawny	Falmouth All Age Rio Bueno Primary	November 7 November 10

Caribe Wave Exercise (Global Tsunami Exercise) - March 22, 2024



A National Communication Exercise to commemorate Carib Wave 2024 was held on March 22, 2024. The ODPEM made telephone calls to MDAs as well as MCs. Emails were sent out with the various messages issued by the Pacific Tsunami Warning Centre (PTWC) and the ODPEM also tested the satellite phones as part of the CDEMA Response Mechanism.

St. Catherine MC in partnership with the ODPEM and Jamaica Energy Partners (Dr. Bird Power Plant) also did a live exercise on the day- Earthquake, Fire and Tsunami Drill. It was excellently executed. The ODPEM completed the online survey issued by UNESCO/ IOC indicating

participation on the day.

Figure 8: The injured are evacuated from the Dr. Bird Plant as part of the Exercise to commemorate Caribe Wave 2024

Tsunami Signs, Shelter Signs in different languages and the procurement of bull horns were installed and handed over to selected parishes. Fourteen (14) tablets were handed over to the MCs.

Date: 17/4/2026

Name: Novia Drummonds-Morgan