



*On the Job Training on
Tsunami Inundation Modelling and Mapping and Development of Tsunami Hazards Maps for
Implementation of UNESCO-IOC Tsunami Ready Pilot Sites in Madagascar, Maldives, Seychelles and Sri Lanka
Hyderabad – India, 16–21 March 2026*

ComMIT Download & Setup

Patanjali Kumar Chodavarapu, M.S (DM), Ph.D

Scientist -F

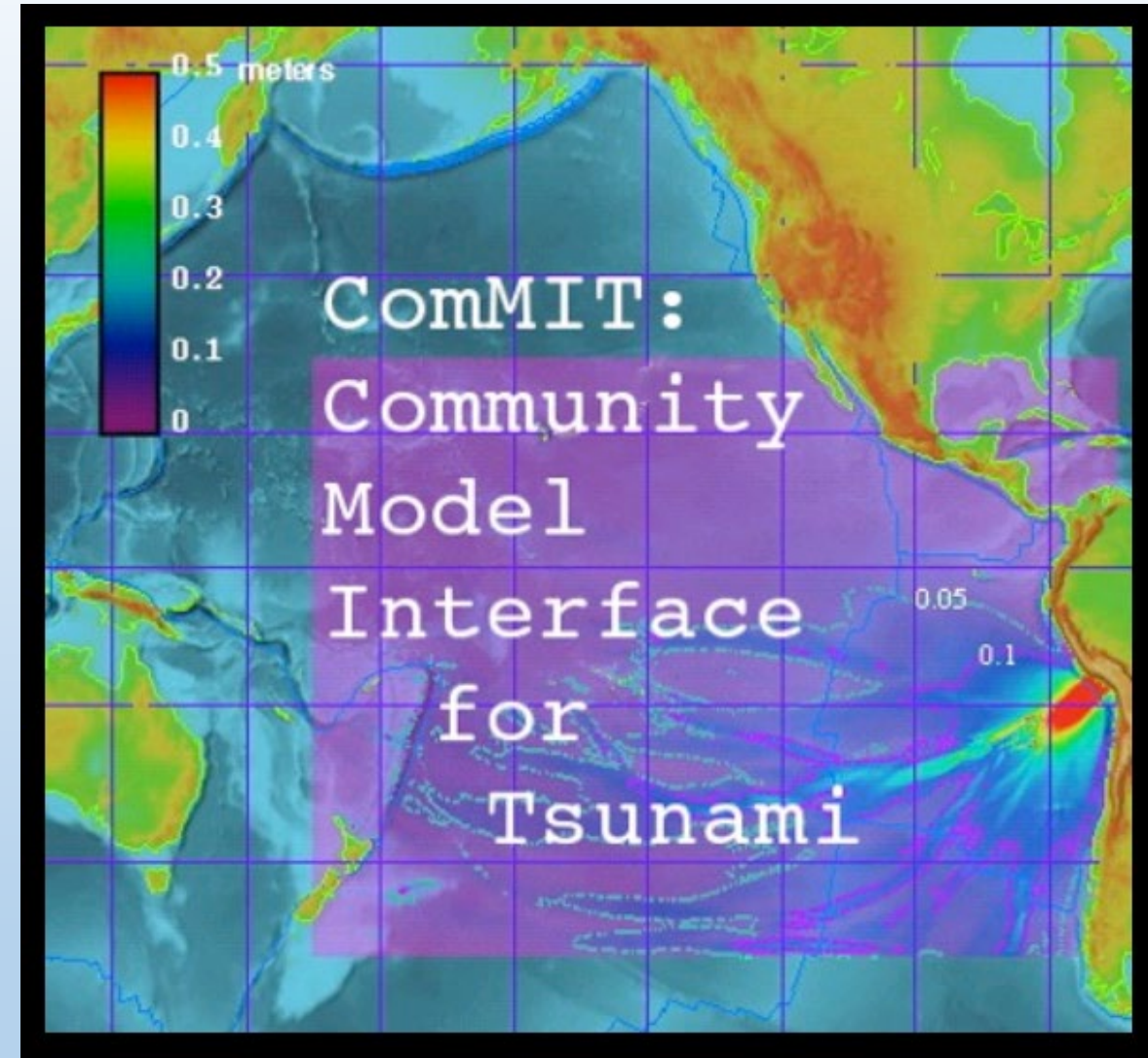
Indian National Center for Ocean Information Services (NCOIS), MoES, Hyderabad

Patanjali@incois.gov.in

What is ComMIT?

ComMIT = Community Model Interface for Tsunami

- An easy-to-use software tool for tsunami inundation modeling
- Built on top of the MOST (Method Of Splitting Tsunamis) numerical model
- Developed by the NOAA Center for Tsunami Research (NCTR), Seattle, USA
- Provides a user-friendly graphical interface to the MOST model
- Enables modelers to run complex simulations without deep programming expertise



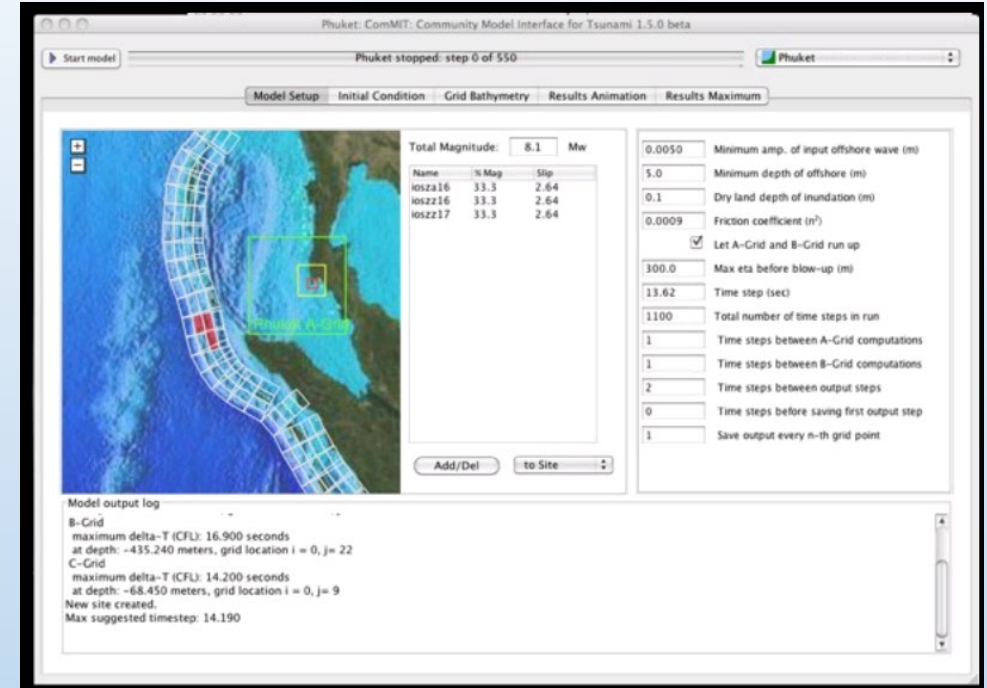
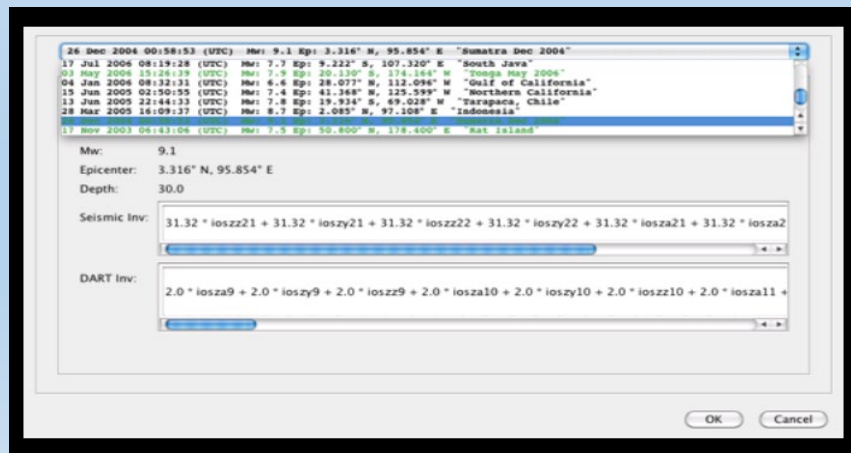
Key Features of ComMIT (1/2)

Source Scenario Setup

- Set up earthquake source scenarios using NOAA's tsunami propagation database
- Select from pre-computed unit sources for rapid scenario configuration

Historical Event Modeling

- Run models of current or past tsunami events
- Use source specifications derived from DART buoy inversion data
- Access historical seismic event catalog (e.g., Sumatra 2004, Tonga 2006)



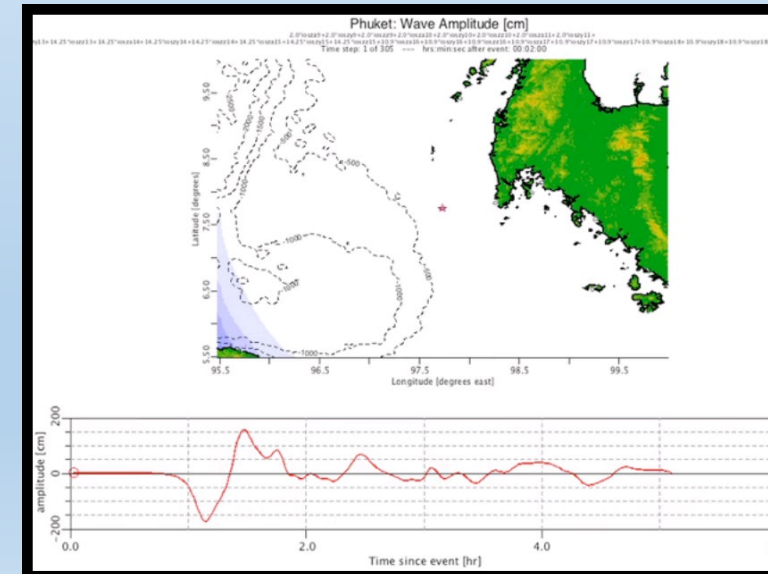
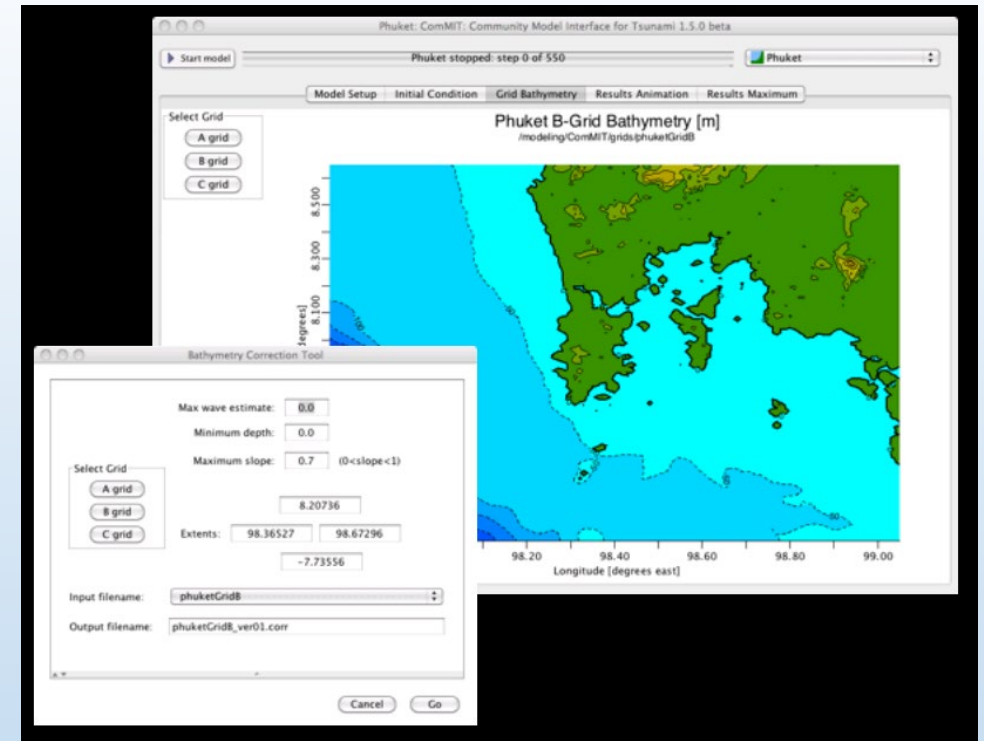
Key Features of ComMIT (2/2)

Bathymetric Grid Tools

- Generate, view, and modify bathymetric model grids (A-Grid, B-Grid, C-Grid)
- Built-in bathymetry correction tool with slope and depth controls

Model Execution & Visualization

- Run the MOST tsunami inundation model directly within the interface
- Display model results as time-series wave amplitude graphs
- Animate wave propagation and inundation extent over time



ComMIT System Architecture

On Your Computer (Client Side)

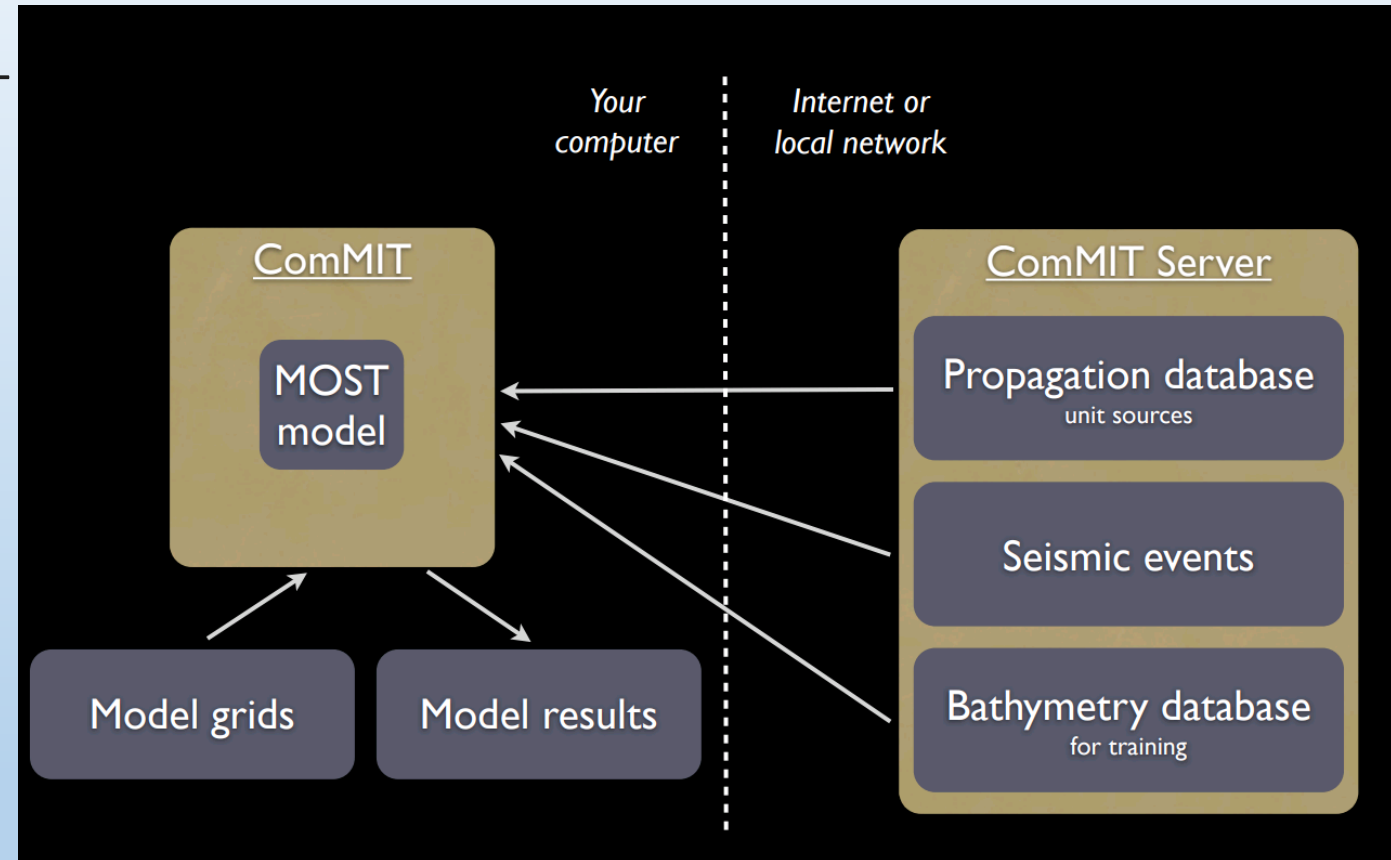
- ComMIT application with the embedded MOST model engine
- Local storage for model grids and output results

ComMIT Server (Remote Side)

- Propagation database — pre-computed unit source solutions
- Seismic events database — historical earthquake catalog
- Bathymetry database (available for training purposes)

Connection

- Client communicates with server via Internet or local training network



Downloading ComMIT

During Training —

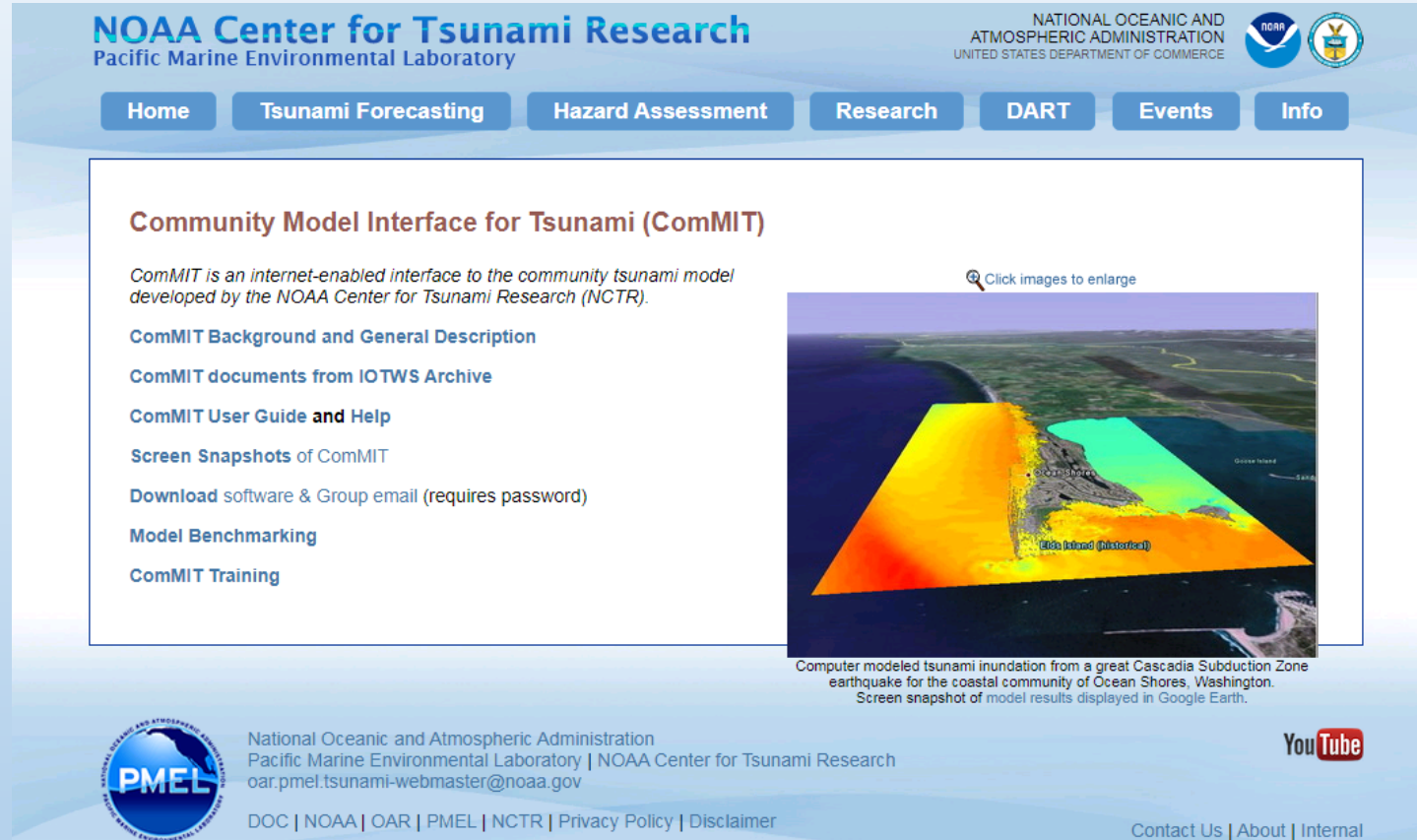
- Connect to ComMIT training network (from Internet)
- Open a web browser and go to:
<http://nctr.pmel.noaa.gov/ComMIT/>
- Download the ComMIT version for your OS (Windows / Mac)

Prerequisites

- Java must be installed on your computer before running ComMIT
- If Java is not installed, download and install it first

NOAA Server

- Download from:
<http://nctr.pmel.noaa.gov/ComMIT/>
- Username: nctr | Password: wave



The screenshot displays the NOAA Center for Tsunami Research website. At the top, it features the NOAA logo and the text "NATIONAL OCEANIC AND ATMOSPHERIC ADMINISTRATION UNITED STATES DEPARTMENT OF COMMERCE". Below this is a navigation menu with buttons for "Home", "Tsunami Forecasting", "Hazard Assessment", "Research", "DART", "Events", and "Info". The main content area is titled "Community Model Interface for Tsunami (ComMIT)" and includes a description: "ComMIT is an internet-enabled interface to the community tsunami model developed by the NOAA Center for Tsunami Research (NCTR)". A list of links is provided: "ComMIT Background and General Description", "ComMIT documents from IOTWS Archive", "ComMIT User Guide and Help", "Screen Snapshots of ComMIT", "Download software & Group email (requires password)", "Model Benchmarking", and "ComMIT Training". To the right of the text is a 3D visualization of a tsunami inundation model, showing a coastal area with a large area of inundation colored in yellow and orange. Labels "Gouver Island" and "Alba Island (historical)" are visible. A caption below the image reads: "Computer modeled tsunami inundation from a great Cascadia Subduction Zone earthquake for the coastal community of Ocean Shores, Washington. Screen snapshot of model results displayed in Google Earth." At the bottom of the page, there is a PMEL logo and contact information: "National Oceanic and Atmospheric Administration Pacific Marine Environmental Laboratory | NOAA Center for Tsunami Research oar.pmel.tsunami-webmaster@noaa.gov". A "YouTube" icon is also present. The footer contains "DOC | NOAA | OAR | PMEL | NCTR | Privacy Policy | Disclaimer" and "Contact Us | About | Internal".

Installation & First Run

Installation Steps

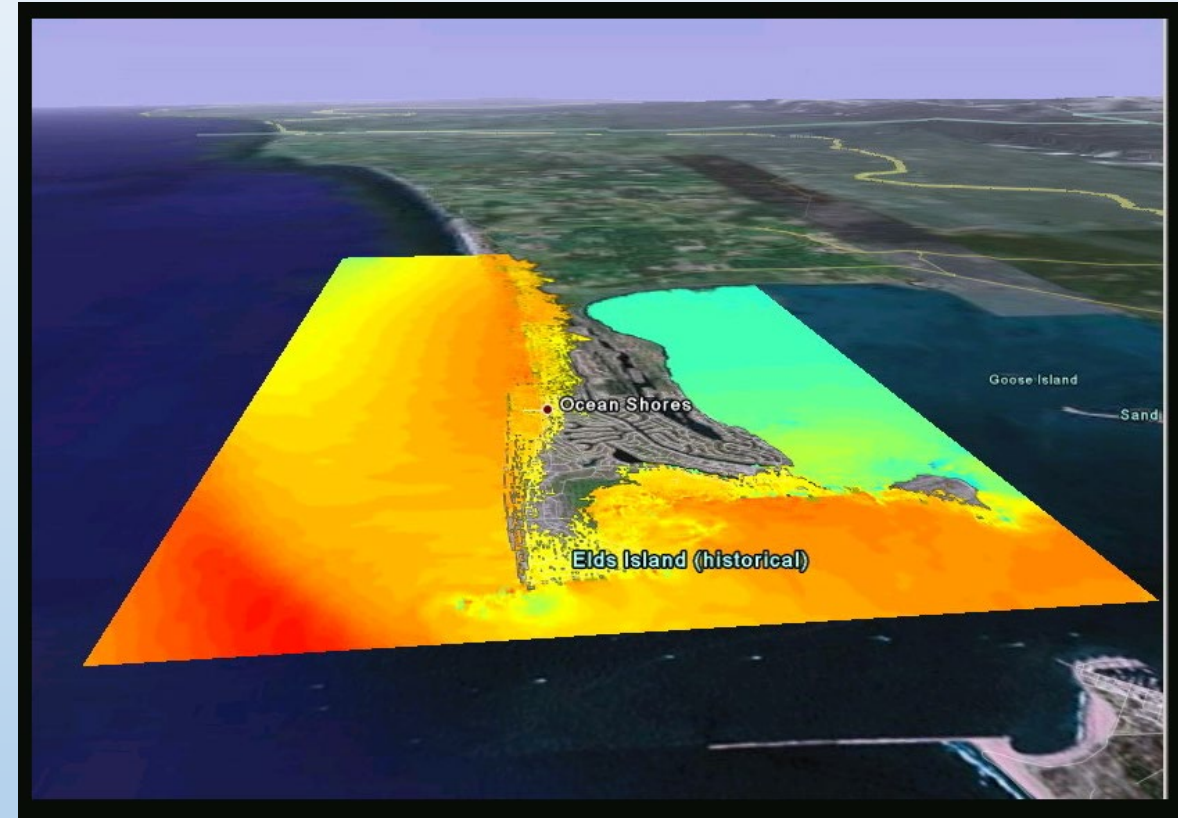
- Download the installer package for your OS (Windows / Mac)
- Run the installer and follow on-screen instructions
- Launch ComMIT after installation completes

Connecting to the Server

- On first launch, ComMIT prompts for server selection
- Training: select Primary ComMIT server

First Model Run

- Follow the Getting Started guide on the ComMIT web page
- Run an initial test model to verify the installation is working



Using ComMIT during Training

Connecting to NOAA Server During-Training

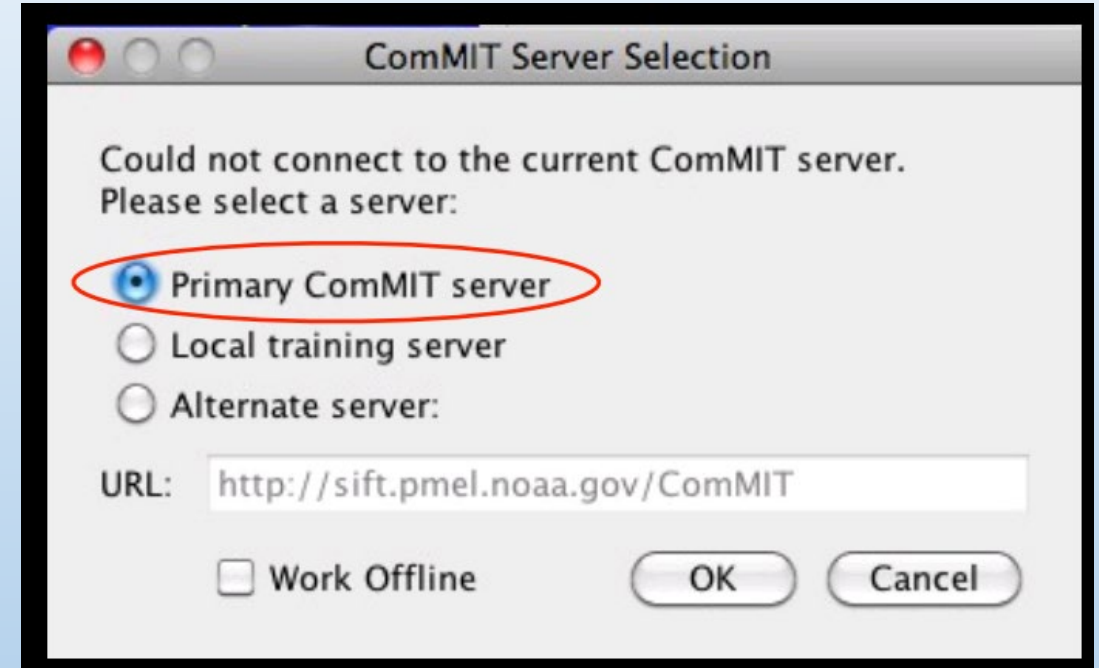
- Select Primary ComMIT server in the Server Selection dialog
- Server URL: <http://sift.pmel.noaa.gov/ComMIT>

Using Your Own Bathymetry Data

- You can load site-specific bathymetry data to build custom models
- Data stays on your local computer — not shared with the server

Application to TIMM Pilot Sites

- Apply ComMIT to develop inundation models for your assigned pilot site
- Pilot sites: Maldives, Sri Lanka, Madagascar, Seychelles
- Use training grids to progress toward final Tsunami Hazard Map



Thank you